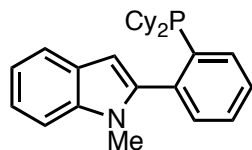


2-(2-(dicyclohexylphosphino)phenyl)-1-methyl-1H-indole (CM-phos)

¹H CD₂Cl₂



7.699
7.688
7.636
7.623
7.530
7.528
7.517
7.515
7.505
7.503
7.478
7.466
7.454
7.415
7.412
7.410
7.405
7.402
7.399
7.397
7.386
7.372
7.262
7.261
7.249
7.237
7.236
7.159
7.158
7.146
7.135
7.134
6.402
5.375
5.364
5.363

— 3.507

1.759
1.740
1.717
1.682
1.648
1.628
1.270
1.182
1.138
1.118
1.098

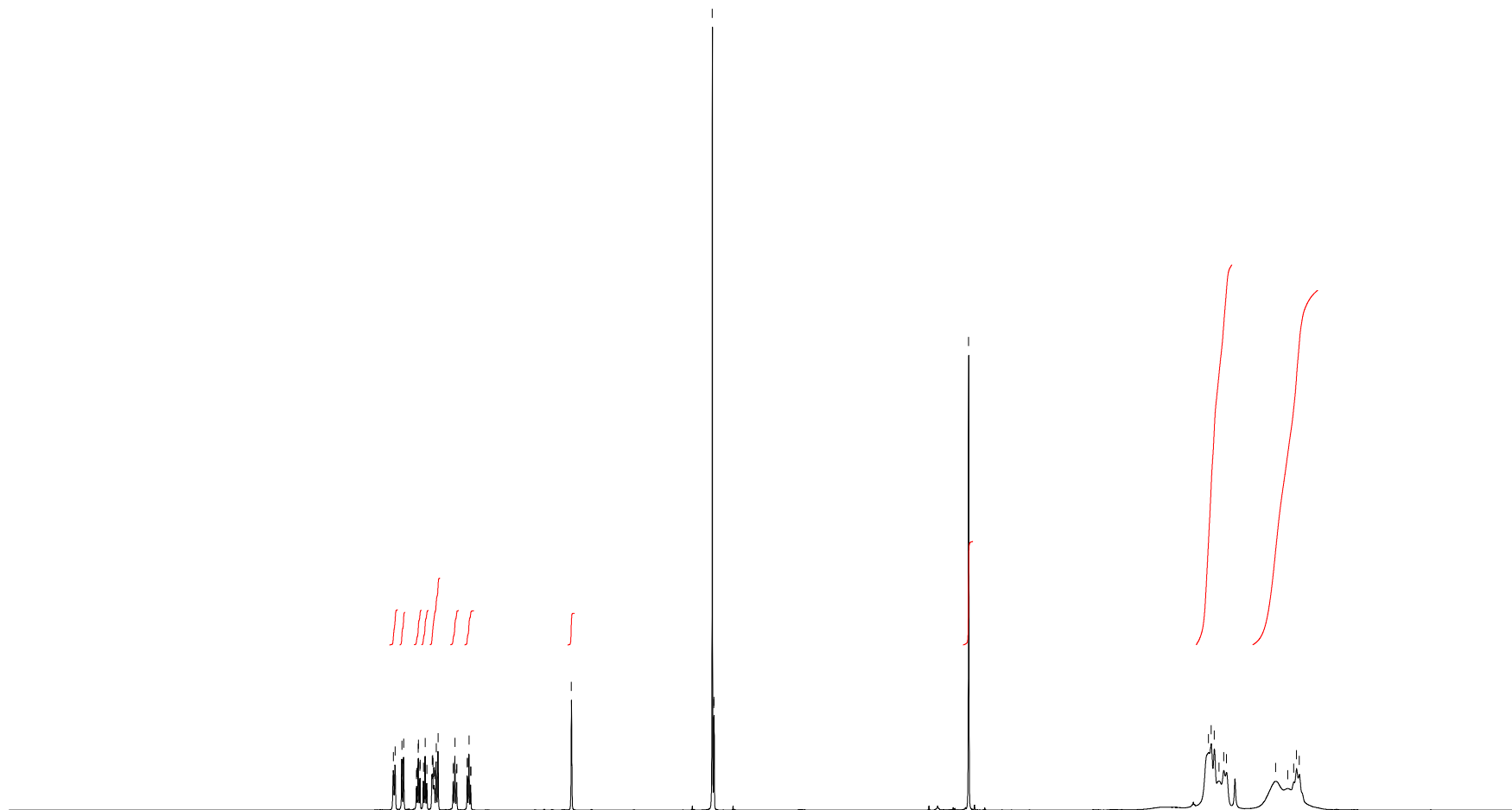


Current Data Parameters
NAME TF2-481
EXPNO 20
PROCNO 1

F2 - Acquisition Parameters
Date_ 20140807
Time 21.19
INSTRUM spect
PROBHD 5 mm CPPBBO BB
PULPROG zg30
TD 65536
SOLVENT CD₂Cl₂
NS 16
DS 2
SWH 12019.230 Hz
FIDRES 0.183399 Hz
AQ 2.7262976 sec
RG 17.5
DW 41.600 use
DE 10.00 use
TE 300.0 K
D1 1.00000000 sec
TDO 1

===== CHANNEL f1 =====
SFO1 600.1337060 MHz
NUC1 1H
P1 12.00 use
PLW1 23.00000000 W

F2 - Processing parameters
SI 65536
SF 600.1300000 MHz
WDW EM
SSB 0
LB 0.30 Hz
GB 0
PC 1.00



10.0 9.5 9.0 8.5 8.0 7.5 7.0 6.5 6.0 5.5 5.0 4.5 4.0 3.5 3.0 2.5 2.0 1.5 1.0 0.5 0.0 ppm

1.11
1.03
1.10
1.09
2.10
1.08
1.07

1.00

3.26

11.99

11.18